

## Ontario Tower, 4 Fairmont Avenue , E14 9JB

\*CASH BUYERS PREFERRED\* | \*QUICK SALE REQUIRED\* | LEASEHOLD | LIFT | GYM | 16TH FLOOR - 648 sq.ft. | BALCONY | SWIMMINGPOOL/HEALTH SPA | SECURE DOOR ENTRY | 24 HOUR CONCIERGE

Asking Price: £385,000 (Offers In Region Of)



# Ontario Tower, 4 Fairmont Avenue , E14 9JB

## DESCRIPTION

The Ontario Tower is the highest residential tower block along the River Thames and is located in Blackwall in the London Docklands. This one bedroom 16th floor flat boasts panoramic views of Canary Wharf set within a development. The apartment has benefits including a 24hr concierge, a secure entry phone system, lift access, a gym, swimming pool and health spa.

The apartment also features an open plan fully fitted kitchen/living room, balcony and a grey bathroom with a bath. Perfect for riverside walks and views of the River Thames the Ontario Tower offers a hotel-style experience. It is also set moments from vibrant Canary Wharf where there is an excellent range of shops, bars and restaurants. All residents of The Ontario can use its gym, swimming pool and health spa.

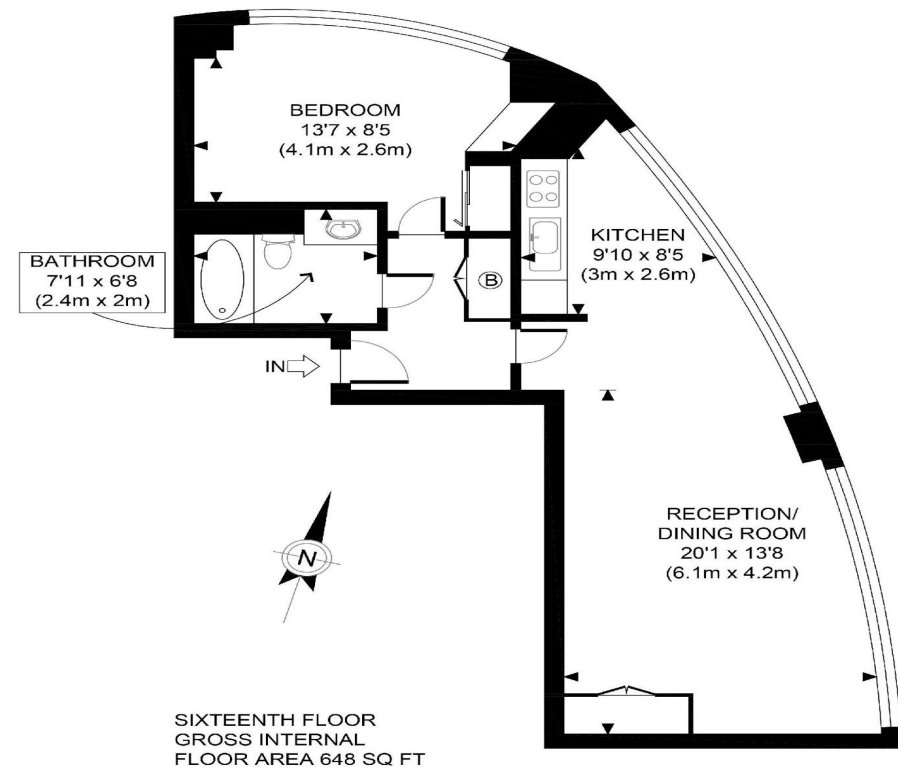


Transport Underground / Tube stations: Blackwall DLR Station is within 0.13 miles (217 metres) Zone: 2 East India DLR Station is within 0.22 miles (356 metres) Zone: 2/3 All Saints DLR Station is within 0.47 miles (757 metres) Zone: 2 Poplar DLR Station is within 0.55 miles (879 metres) Zone: 2 North Greenwich is within 0.58 miles (926 metres) Zone: 2/3 National rail stations: West Ham is within 1.55 miles (2.5 km) Limehouse is within 1.56 miles (2.5 km) Maze Hill Rail Station is within 1.69 miles (2.7 km) Westcombe Park Rail Station is within 1.84 miles (3.0 km) Greenwich is within 2 miles (3.2 km)

Schools: Woolmore Primary School ( 0.3 miles) Culloden Primary (0.5 miles) New City College (0.5 miles) CSPC International School, Hui Yang ( 0.6 miles)







|   |  |                   |
|---|--|-------------------|
| APPROX. GROSS INTERNAL FLOOR AREA 648 SQ FT / 60 SQM  |  | Ontario Tower E14 |
| Disclaimer: Floor plan measurements are approximate and are for illustrative purposes only. While we do not doubt the floor plan accuracy and completeness, you or your advisors should conduct a careful, independent investigation of the property in respect of monetary valuation |  | date 25/11/20     |

Do you have a property  
to sell or let?



02081685555



55 Royal Mint Street, London, E1 8LG



towerbridge@hunters.com

If you are thinking of selling your home or just curious to discover the value of your property, Hunters would be pleased to provide free, no obligation sales and marketing advice. Even if your home is outside the area covered by our local offices we can arrange a Market Appraisal through our national network of Hunters estate agents.



VAT Reg. No 339397261 | Registered No: 12172899 | Registered Office: 55 Royal Mint Street, London, E1 8LG  
Hunters Tower Bridge LONDON TOWER BRIDGE ESTATES LTD